












Quinta d'Anta has

-  The following information is available to all customers: How to take basic precautions to prevent and control infection relating to the COVID-19 coronavirus outbreak.
-  The following information is available to all customers: Internal rules relating to the COVID-19 coronavirus outbreak.
-  The establishment has: Pedal-operated waste bins with plastic liners.
-  The establishment has: Alcohol based antiseptic or alcohol based solution dispensers, at each floor, near entrances/exits and at the entrance of the restaurants, bars and shared toilet facilities.
-  The establishment has: Sets of individual protective equipment available to clients (maximum capacity of the establishment).
-  The establishment has: sufficient sets of individual protective equipment for all employees.
-  The establishment has: A room to isolate people suspected or infected with the COVID-19 virus, preferably with natural ventilation or a mechanical ventilation system, with washable outer coverings, bathroom, stocked with cleaning materials, surgical masks and disposable gloves, thermometer, handsfree waste bin, bin bags, bags for used clothing, a supply of water and non-perishable food.
-  The establishment has: Equipment for hand-washing with liquid soap and paper towels in WCs.
-  The establishment has: Single use cleaning materials in stock proportional to its requirements, including disinfectant wipes, bleach and 70° alcohol.

Quinta d'Anta ensures



The service organisation ensures: Decontamination of the isolation area whenever there are positive cases of infection, and extra cleaning and disinfection whenever there are patients suspected of being infected, particularly as to those surfaces that are frequently touched by hand and likewise most used, in accordance with Directorate General for Health instructions.



The service organisation ensures: The storage of waste produced by those suspected of infection will be placed in plastic bags, sealed with ties and then be disposed by a licensed provider that deals with the management of hospital bio-hazardous materials.



The service organisation ensures: That there is always a responsible employee on duty to activate the procedures in the event of suspected infection (taking the person with symptoms to the isolation area, providing him/her with the necessary assistance and contacting the national health service).



The establishment ensures: The disinfection of the swimming pool, or other equipment in SPAs / wellness areas (where applicable) is done in accordance with internal protocol.



The establishment ensures: The disinfection of the jacuzzi (where applicable) is done regularly by replacing all the water followed by sterilisation with an adequate quantity of chlorine, in accordance with internal protocol.



The internal protocol for cleaning and sanitation ensures: The definition of specific care for changing bed linen and cleaning in the rooms, carried out in two stages with spaced intervals and with adequate protection according to the internal protocol.



The internal protocol for cleaning and sanitation ensures: High-temperature washing of cloakrooms and other accessories provided (e.g. towels), used in business activities by employees and customers (around 60° C).



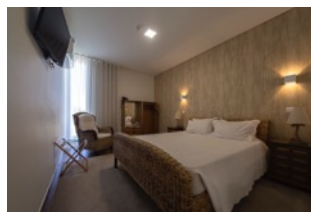
The internal protocol for cleaning and sanitation ensures: The removal of bed linen and towels is performed without shaking, rolling it from the outside in, avoiding contact with the body and taking it directly to the washing machine.



All Employees received information and/or specific training on: How to self-check daily for fever (take body temperature twice a day and record the reading and time of check), check for coughing or difficulty in breathing.



All Employees received information and/or specific training on: How to comply with Directorate General for Health guidelines for cleaning surfaces and dealing with clothing at work premises.



Quinta d'Anta ensures



The establishment ensures: Regular renewal of air in rooms and enclosed spaces.



The establishment ensures: All surfaces where people, employees and clients have contact are washed and disinfected in accordance to our internal protocol, ensuring the control and prevention of infections and antimicrobial resistance.



The establishment ensures: All surfaces and objects liable to be in touched are cleaned several times a day (including light and lift switches, door knobs, cupboard handles).



The establishment ensures: Where food is served an increase in the cleaning of utensils, equipment and surfaces and avoidance of direct handling of food by clients and employees will be implemented.



The establishment ensures: Wet cleaning in preference to dry or vacuum cleaning.



All Employees received information and/or specific training on: Internal rules relating to the COVID-19 coronavirus outbreak.



All Employees received information and/or specific training on how to take basic precautions to prevent and control infection relating to the COVID-19 coronavirus outbreak, including Hand disinfection: wash hands frequently with soap and water for at least 20 seconds, or use hand disinfectant containing at least 70° alcohol, covering all surfaces of the hands and rubbing them until dry.



All Employees received information and/or specific training on how to take basic precautions to prevent and control infection relating to the COVID-19 coronavirus outbreak, including Social behaviour: change the frequency and form of contact between employees and between employees and customers, avoiding (where possible) close contact, handshakes, kisses, shared work stations, physical meetings and shared meals, utensils, cups and towels.



All Employees received information and/or specific training on how to take basic precautions to prevent and control infection relating to the COVID-19 coronavirus outbreak, including Breath etiquette: cough or sneeze into your bent forearm or use a tissue, which must then be binned immediately; always disinfect your hands every time you cough or sneeze and after blowing your nose; avoid touching your eyes, nose and mouth with your hands.

